



ARMONIA | NEW CAPITAL



## A WORD FROM THE CHAIRMAN

“

Our model of upscale real estate solutions allows us to expand across new fourth generation cities in Egypt, and continue to earn the trust of customers, employees, and shareholders.

”

**Ahmed El Tayebi**  
Chairman



**THE LAND  
DEVELOPERS**

## **ABOUT THE LAND DEVELOPERS**

The Land Developers is an Egyptian real estate development joint stock company that brings a wealth of commercial and real estate experience through their joint shareholders. The three major shareholders are El Tayebi Developments, A-part, a leading after market automotive company, and The Steel and Concrete Company.

The Land Developers has an extensive real estate experience inherited from El Tayebi Developments; a well established name operating since 2006 with completed high-end projects in the finest districts of Maadi to New Cairo, West Golf, and Alexandria. El Tayebi's strong portfolio of boutique developments which started out catering mostly to an expat clientele with specifically tailored foreign standards has added to their industry expertise with a unique approach of implementation very distinctive to the market.



العاصمة الادارية الجديدة

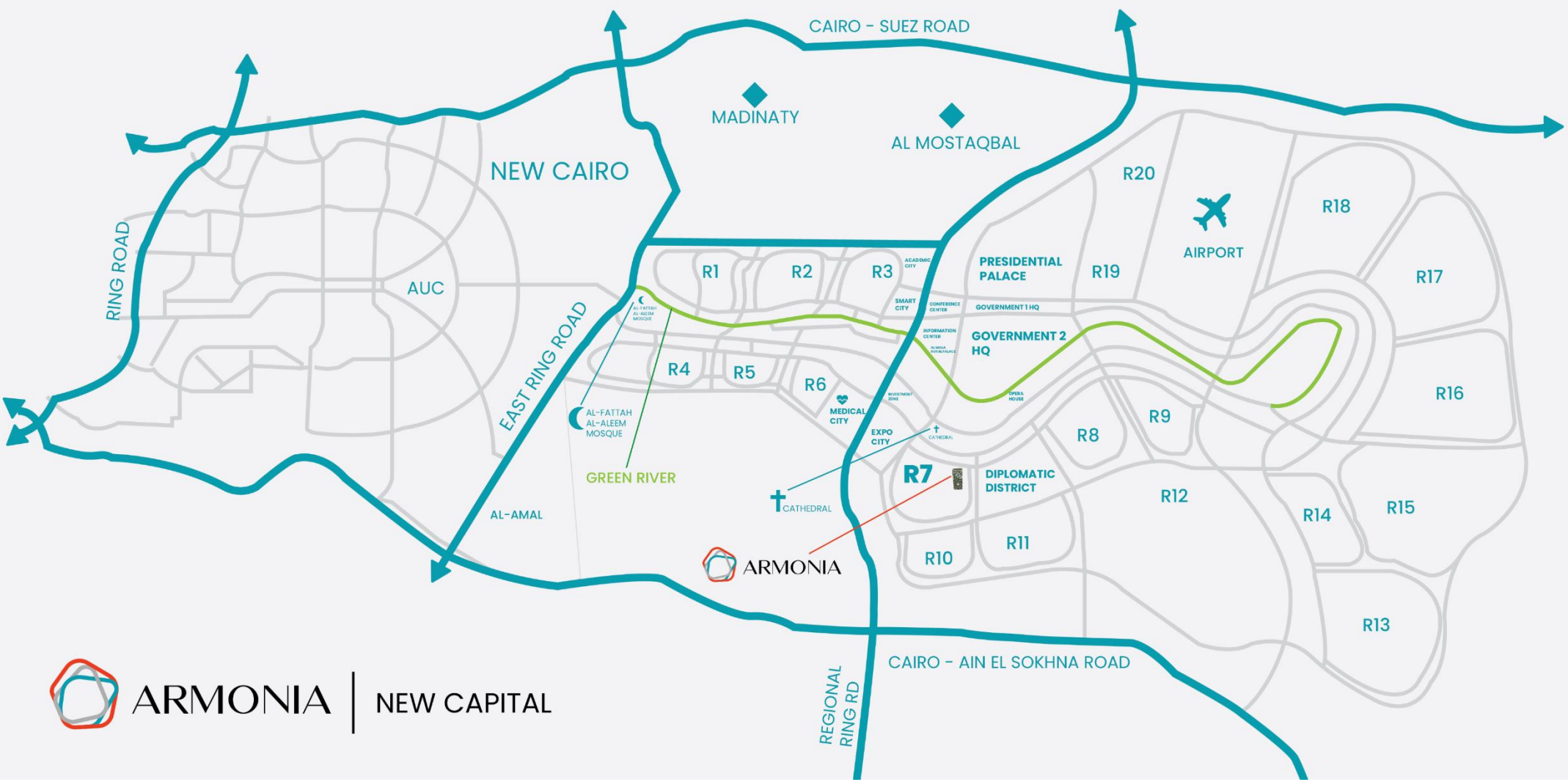


## عن أرمونيا

على مساحة 42 فدان، ARMONIA بها نسبة بناء 20% أما الـ 80% المتبقية هي مخصصة للمناطق الخضراء في الكمبوند. ARMONIA تقدم للعملاء العديد من المساحات و الأنواع المختلفة حيث أن بها الوحدات التي بها غرفة نوم واحدة و حتى 4 غرف نوم. المساحات تبدأ من 2م87 حتى 2م347 لتواكب جميع احتياجات العملاء

ARMONIA تقع في اكثر المواقع الاستراتيجية في منطقة الـ R7:

- 0.8 كم عن الحي الدبلوماسي
- 1.6 كم من الأوبرا
- 2.1 كم من النهر الاخضر
- 2.5 كم من كاتدرائية
- 13.2 كم من مسجد الفتاح العليم
- 4.1 كم من الحي الحكومي
- 4.8 كم من أرض المعارض
- 5.3 كم من المدينة الطبية
- 5.5 كم من المنطقة الاستثمارية
- 8.8 كم من المدينة الأكاديمية
- 10 كم من المطار







 THE LAND DEVELOPERS









# THE LAND DEVELOPER





THE LAND DEVELOPERS

















THE LAND DEVELOPERS















ARMONIA





# المخطط العام للمشروع . . .



# Unit Types

١ غرفة من ٧٠ الى ٩٠ متر

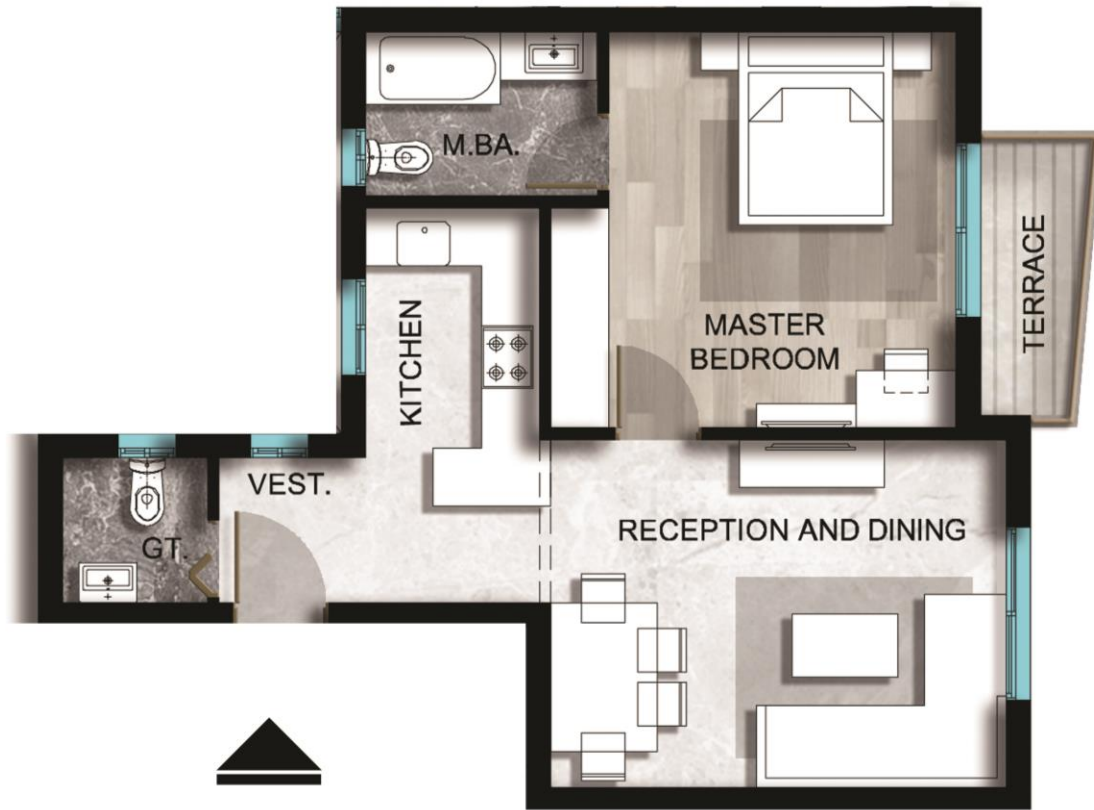
٢ غرفة من ٩٤ الى ١٥٧ متر

٣ غرف من ١٣٣ الى ١٩٣ متر

٤ غرف من ١٩١ الى ٣٤٧ متر



# 1 Bedroom Typical



Typical 75 sqm

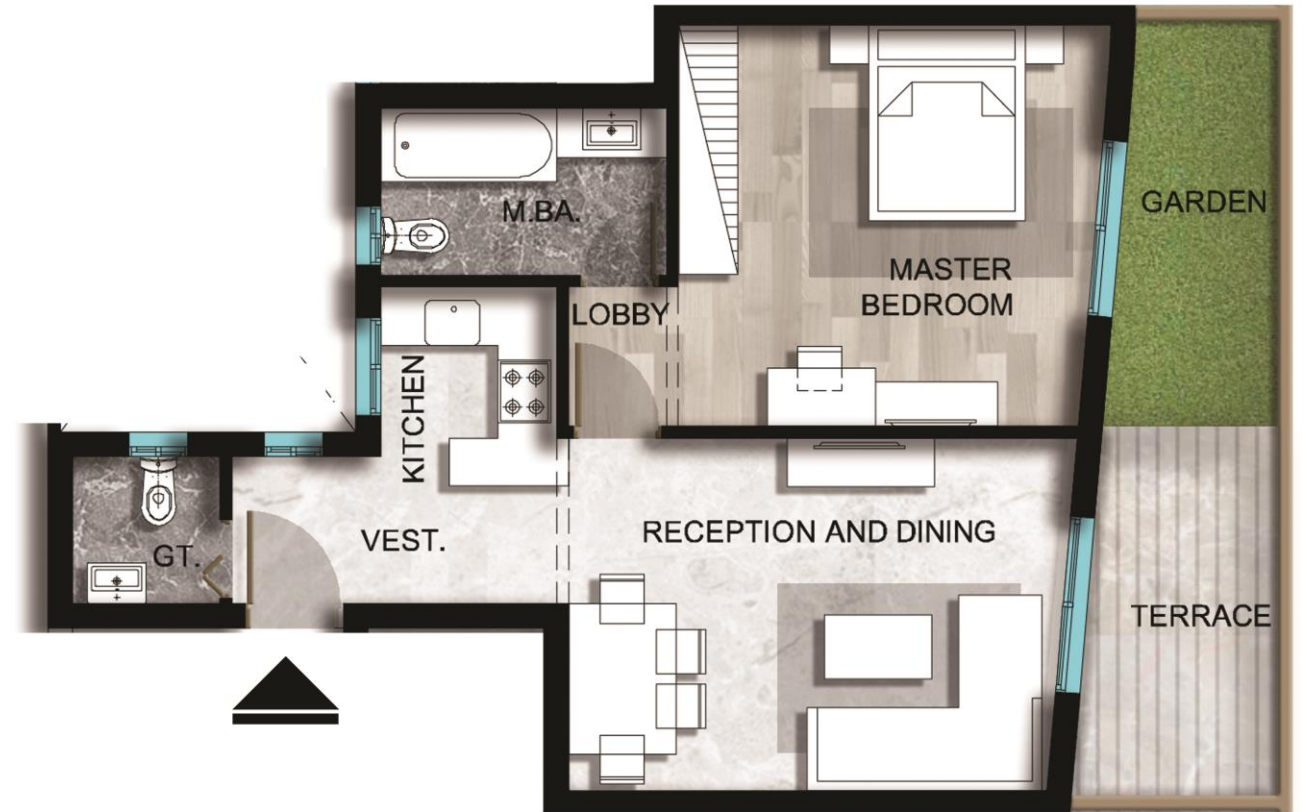


Typical 70 sqm

# 1 Bedroom Ground



Ground 83 sqm



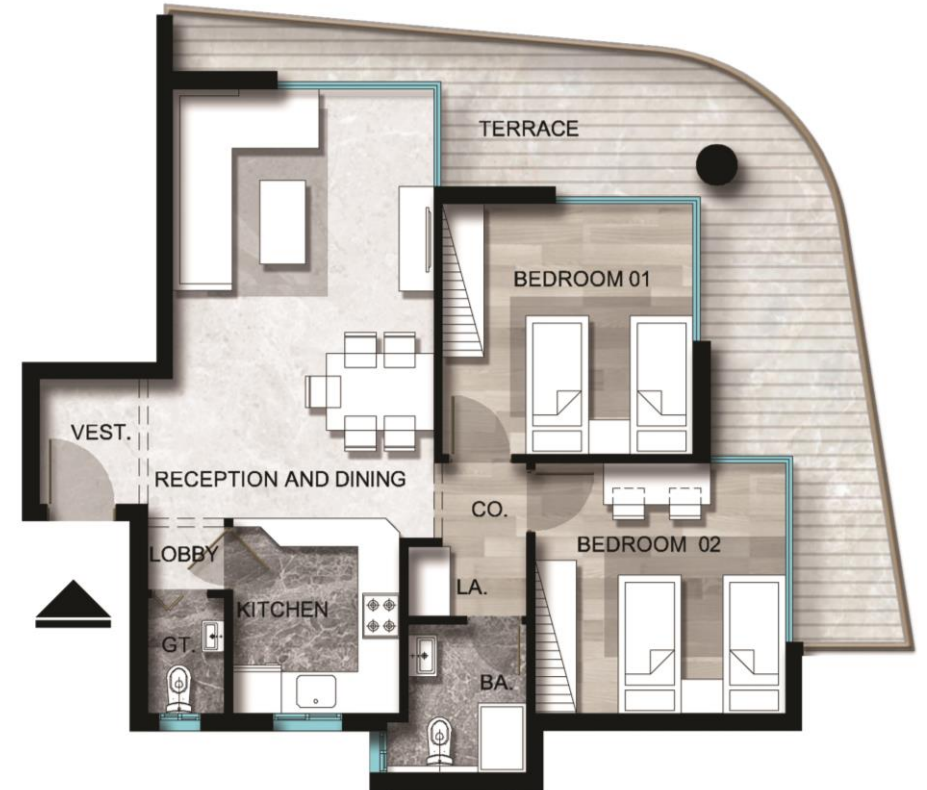
Typical 88 sqm



# 2 Bedroom Typical



Typical 90 sqm



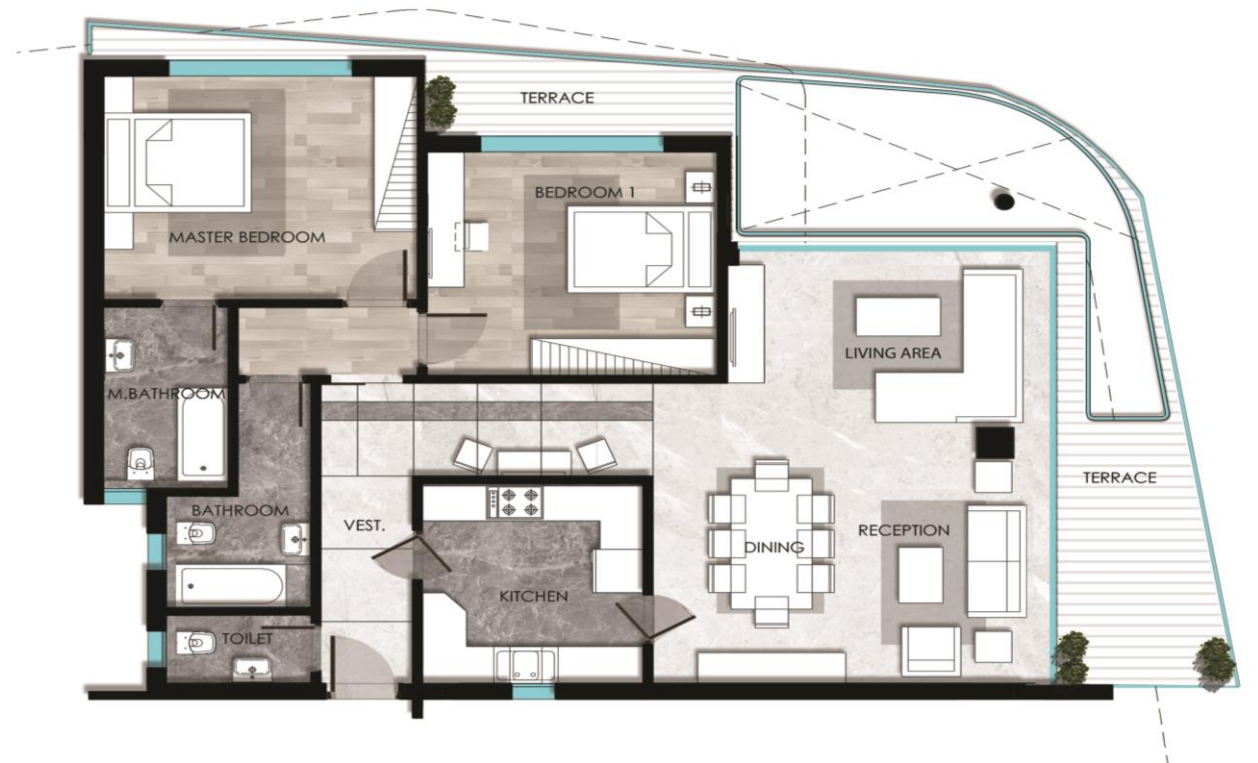
Typical 120 sqm



# 2 Bedroom Typical



Typical 115 sqm



Typical 156 sqm



# 2 Bedroom Ground



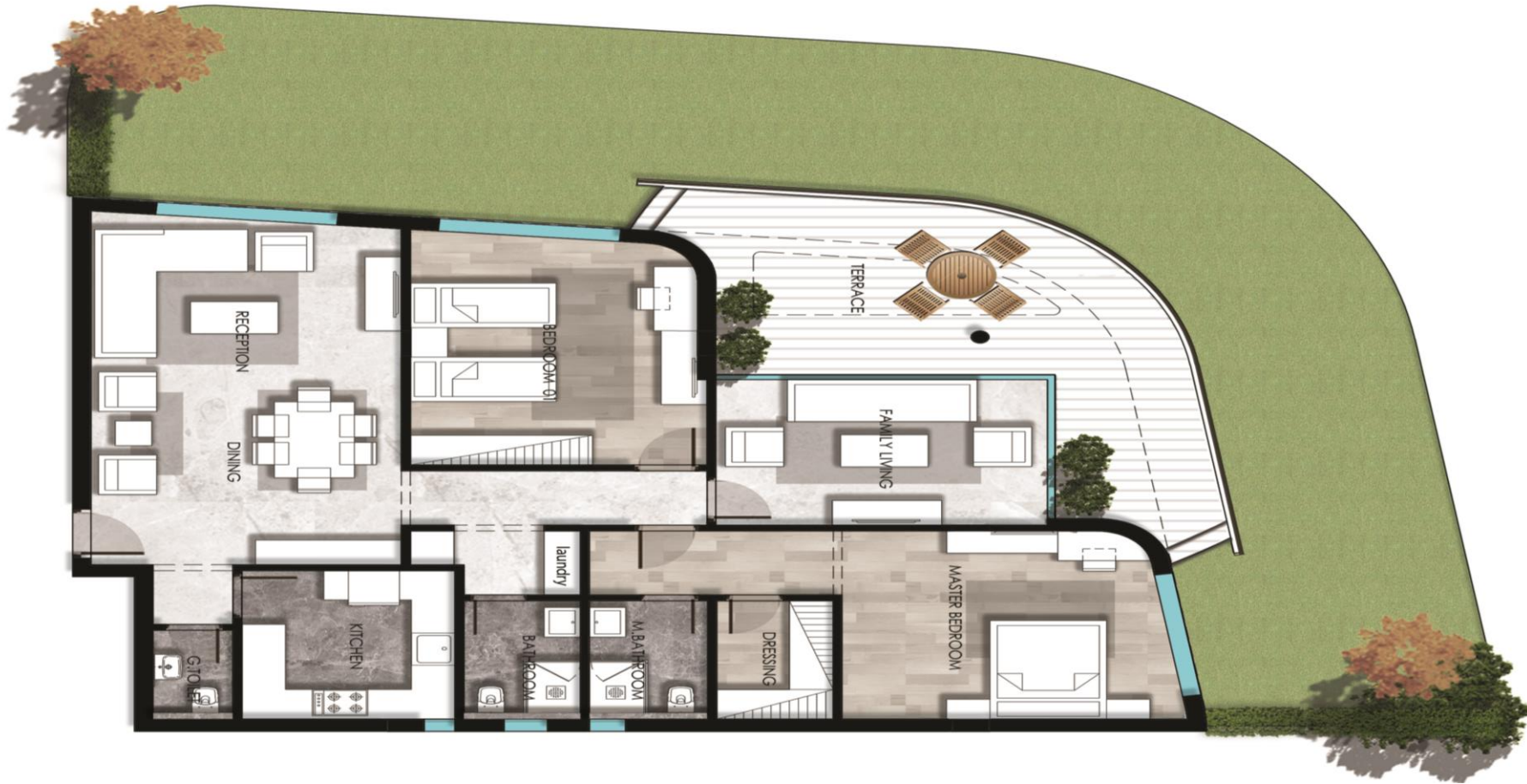
Ground 86 sqm



Ground 128 sqm



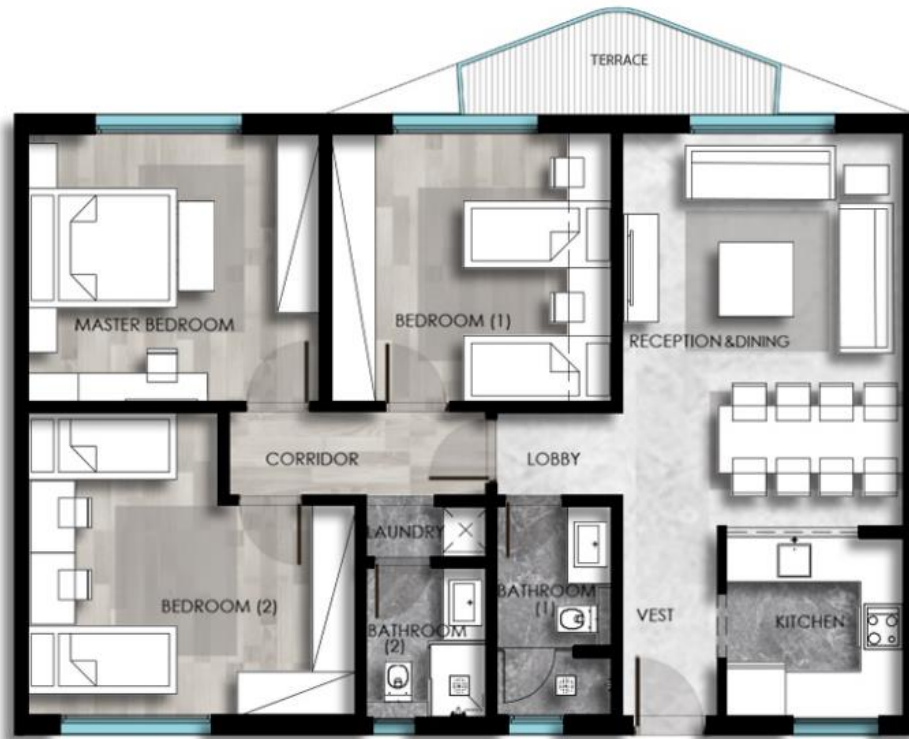
# 2 Bedroom Ground



Ground 186 sqm



# 3 Bedroom Typical



Typical 135 sqm



Typical 143 sqm



# 3 Bedroom Typical



Typical 155 sqm



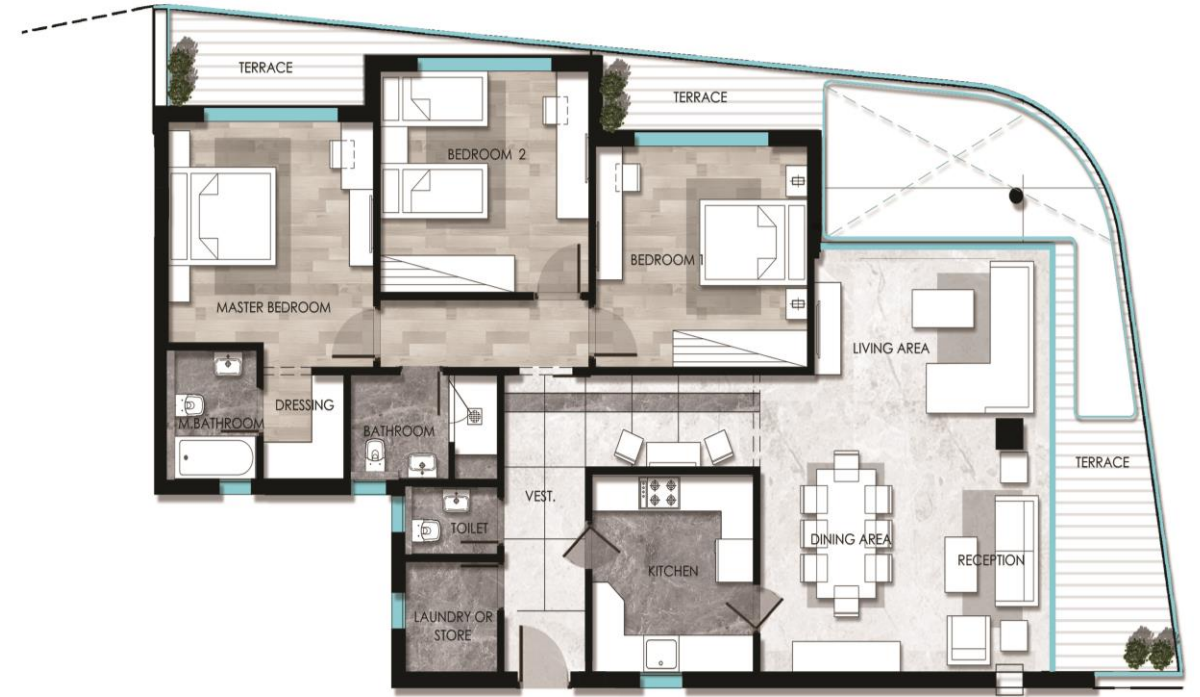
Typical 180 sqm



# 3 Bedroom Typical



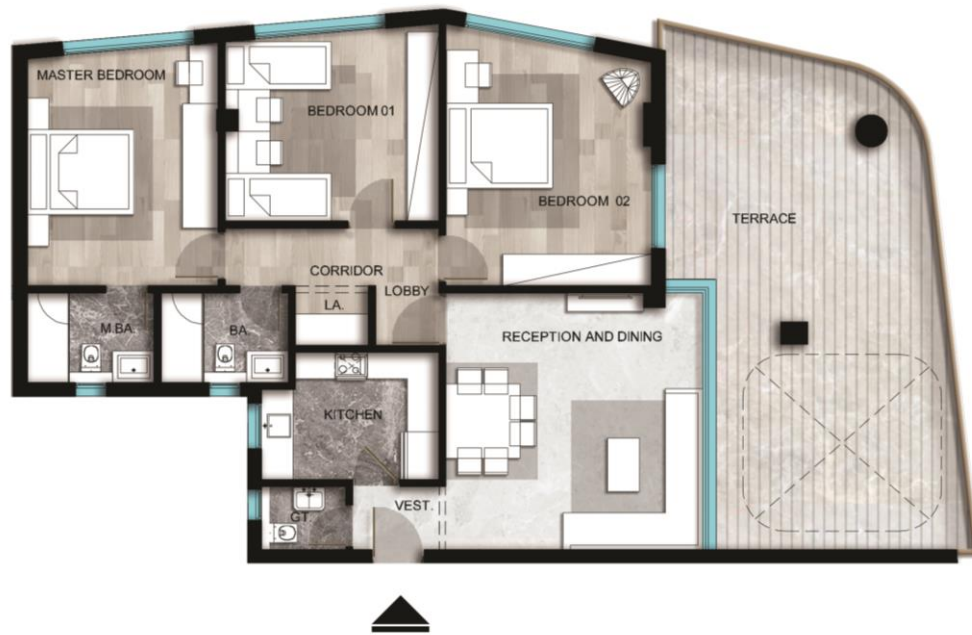
Typical 152 sqm



Typical 186 sqm



# 3 Bedroom Typical



Typical 184 sqm



Typical 190 sqm



# 3 Bedroom Ground



Ground 130 sqm



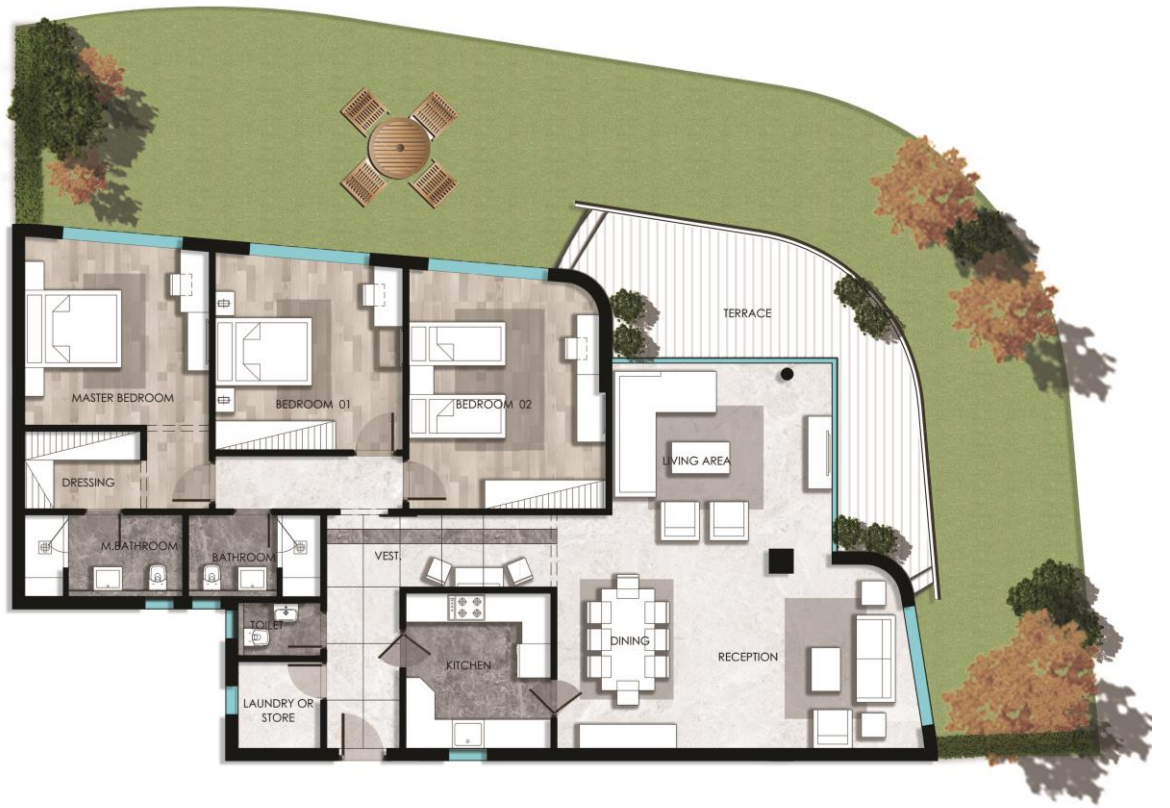
Ground 175 sqm



# 3 Bedroom Ground



Ground 179 sqm



Ground 220 sqm



# 4 Bedroom Typical



Typical 190 sqm

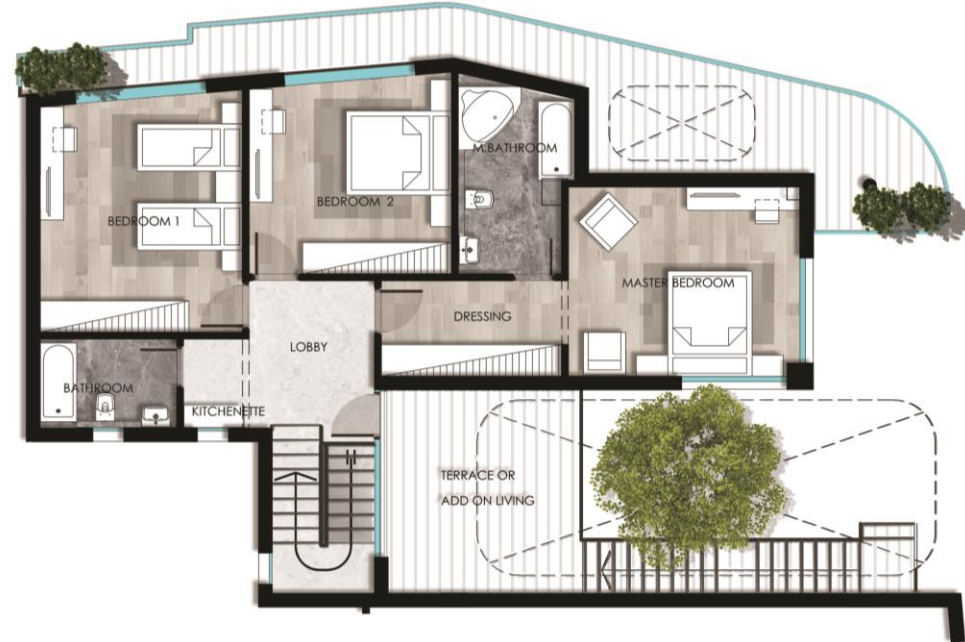


# 4 Bedroom Ground



Ground 218 sqm

# Ceilo Villa 347 sqm



Duplex 6<sup>th</sup> & 7<sup>th</sup> floor  
4 bedrooms



Thank you

